

## LABOUR MARKET SITUATION

Paris, 17 April 2025

### OECD employment and labour force participation rates broadly stable in the fourth quarter of 2024

OECD employment and labour force participation (LFP) rates remained broadly stable at 70.2% and 73.9% in the fourth quarter of 2024, close to their peaks recorded in the previous quarter (Figure 1). Both indicators were at or near their record highs in 11 of the 38 OECD countries, including Germany, Japan, and Türkiye (Tables 1 and 2).

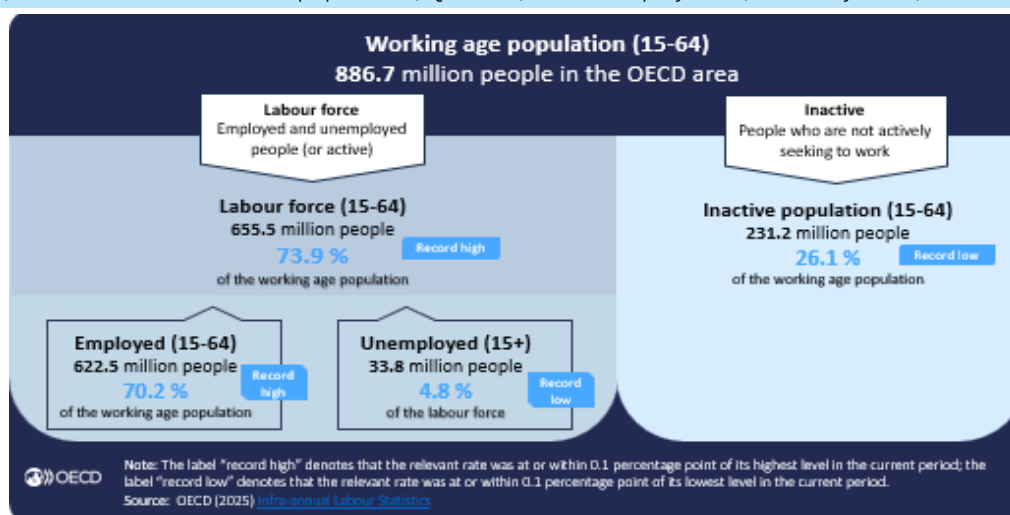
In Q4 2024, the employment rate exceeded the OECD average of 70.2% in two-thirds of OECD countries. Among G7 countries, employment rates in Italy and France remained below the OECD average. Türkiye remained the OECD country with the lowest employment rate, at 55.2%. By contrast, employment rates were above 80% in Switzerland, the Netherlands and Iceland (Figure 2). Employment rates were stable in 14 OECD countries compared with the previous quarter, while they fell in 15 and rose in 9 (Table 1).

LFP rates for individuals aged 15 to 64 were higher than the OECD average of 73.9% in almost three-quarters of OECD countries in Q4 2024. Türkiye, Mexico, and Italy recorded the lowest rates (Table 2).

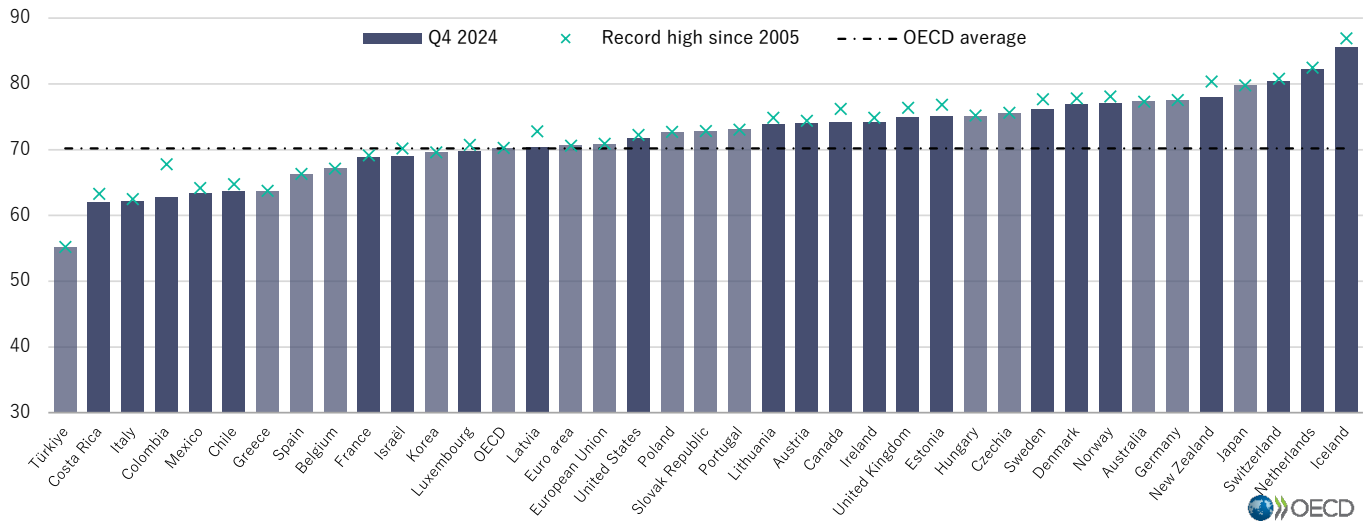
For all of 2024, the OECD employment rate was slightly higher than for 2023 (up by 0.2 percentage points [p.p.]), reflecting mainly an increase in the labour force participation rate. In the euro area, the employment rate increased by 0.4 p.p., reflecting both falling unemployment rates and rising participation rates. The largest year-on-year increases in the employment rate were recorded in Greece (up by 1.5 p.p.), Iceland (up by 1.6 p.p.), and Costa Rica (up 2.4 by p.p.), reflecting primarily, even exclusively in Iceland, rising labour force participation rates. In some countries, including Germany and the United States, the increase in labour force participation, was offset almost entirely by an increase in the unemployment rate, resulting in little or no change in the employment rate. By contrast, a decline in the employment rate of more than 1.0 p.p. was recorded in New Zealand, Finland and Canada, reflecting both rising unemployment and falling participation rates (Figure 3).

In February 2025, the OECD unemployment rate held steady at 4.8%, having been at or below 5.0% since April 2022 (Table 3 and Figure 4). The unemployment rate reached record lows in the European Union (5.7%) and the euro area (6.1%). Compared with January, February unemployment rates were unchanged in 22 OECD countries, declined in 7, and rose in Czechia and Finland, with women accounting for the larger share of this rise. The unemployment rates remained broadly stable in Canada at 6.7% and in the United States at 4.2% in March 2025. In February 2025, the OECD unemployment rate was broadly stable for both women and men as well as for younger workers and workers aged 25 and above (Tables 5 and 6).

» **Figure 1 – Labour market situation in the OECD area**  
Employment, labour force and inactive population, Q4 2024, and unemployment, February 2025, seasonally adjusted



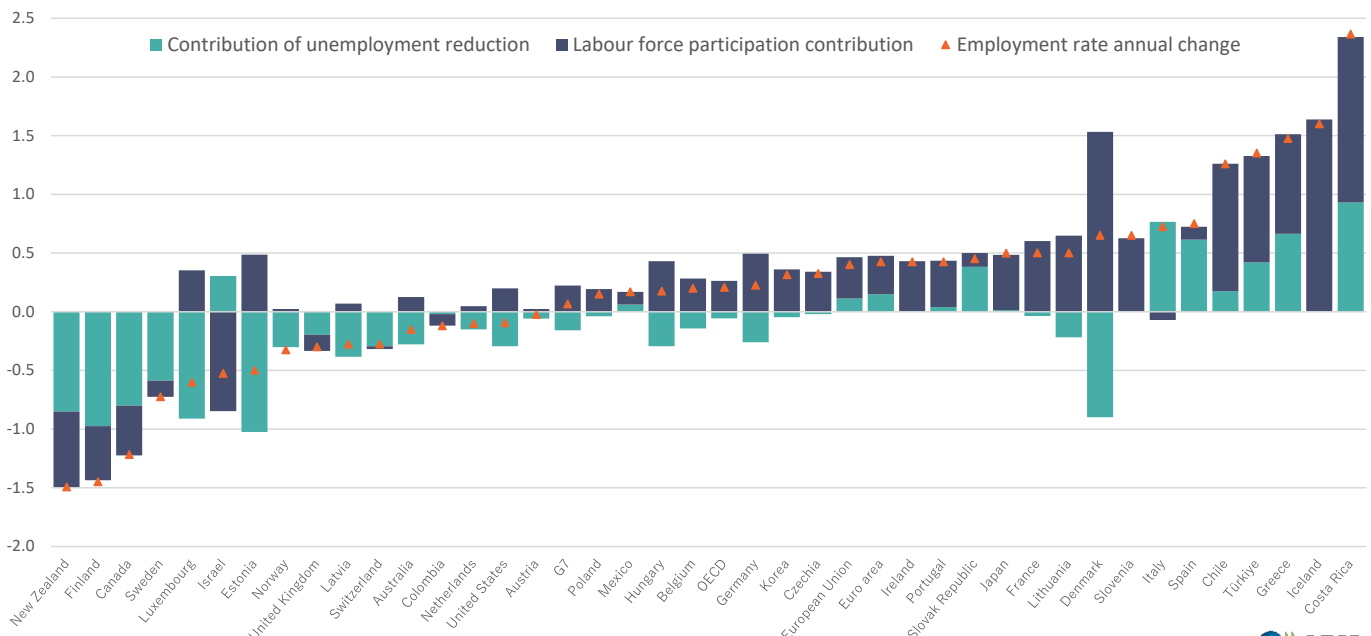
**Figure 2 – Employment rate for OECD countries**  
 Q4 2024 compared with the highest rate recorded since 2005, percentage of working age population, seasonally adjusted



Note: The employment rate in Q4 2024 was at or within 0.1 percentage point of its record high in Australia, Belgium, Czechia, Germany, Greece, Hungary, Japan, Korea, Poland, Portugal, Slovak Republic, Spain, and Türkiye as well as in the OECD, the euro area and the European Union (bars reported in blue light).

Source: OECD (2025) [Infra-annual Labour Statistics](#), and [Employment rates](#)

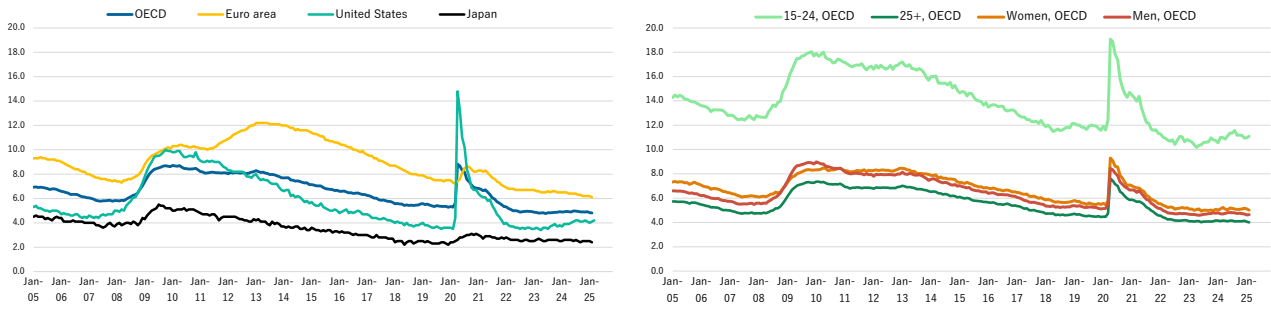
**Figure 3 – Contributions to the variation in the employment rate for OECD countries**  
 2024 compared with 2023, percentage points



Note: The change in the employment rate is broken down into contribution from the decline in unemployment and from the increase in labour force participation. The contribution of the decline in unemployment is calculated as the negative of the change in the unemployment rate between 2024 and 2023 times the average labour force participation rate observed in the two periods. The contribution of the increase in labour force participation is calculated as the change in the labour force participation rate between 2024 and 2023 times one minus the average unemployment rate observed in the two periods. The sum of these two shares may not sum to employment rate change exactly, due to rounding.

Source: OECD (2025) [Infra-annual Labour Statistics](#), [Employment rates](#), and [Labour force participation rates](#)

**Figure 4 – Unemployment rates**  
 Percentage of labour force, seasonally adjusted



Note: The fall in the OECD unemployment rate when compared with the April 2020 peak should be interpreted with caution, as it largely reflects the return of temporary laid-off workers in the United States and Canada, where they are recorded as unemployed, unlike in most other countries, including European member states, where they are recorded as employed.

Source: OECD (2025) [Infra-annual Labour Statistics](#) and [Monthly unemployment rates](#).

**Table 1 – Employment rates and levels (aged 15–64)**
*Percentage of the working age population and levels, seasonally adjusted*

|                        | Employment rates |      |      |      |      |      |      |      |      |      | Change from previous period | Record high |               | Levels  |
|------------------------|------------------|------|------|------|------|------|------|------|------|------|-----------------------------|-------------|---------------|---------|
|                        | 2022             | 2023 | 2024 | 2019 | 2023 |      |      | 2024 |      |      |                             | since 2005  | Thousands     |         |
|                        |                  |      |      |      | Q4   | Q3   | Q4   | Q1   | Q2   | Q3   |                             |             |               | Q4      |
| <b>OECD</b>            | 69.3             | 70.0 | 70.2 | 68.9 | 70.1 | 70.1 | 70.2 | 70.2 | 70.3 | 70.2 | →                           | <b>70.3</b> | <b>2024Q3</b> | 622,497 |
| <b>G7</b>              | 72.4             | 73.0 | 73.0 | 72.3 | 73.0 | 73.1 | 73.0 | 73.0 | 73.1 | 73.1 | →                           | <b>73.1</b> | <b>2024Q3</b> | 354,258 |
| <b>European Union</b>  | 69.8             | 70.4 | 70.8 | 68.1 | 70.4 | 70.6 | 70.7 | 70.8 | 70.9 | 70.9 | →                           | <b>70.9</b> | <b>2024Q4</b> | 201,689 |
| <b>Euro area</b>       | 69.4             | 70.1 | 70.5 | 68.5 | 70.0 | 70.2 | 70.3 | 70.5 | 70.5 | 70.6 | →                           | <b>70.6</b> | <b>2024Q4</b> | 156,830 |
| <b>Australia</b>       | 76.9             | 77.2 | 77.1 | 74.1 | 77.2 | 77.1 | 76.8 | 76.8 | 77.2 | 77.3 | →                           | <b>77.3</b> | <b>2024Q4</b> | 13,732  |
| <b>Austria</b>         | 74.0             | 74.1 | 74.1 | 73.7 | 74.0 | 74.1 | 74.1 | 74.3 | 73.9 | 74.1 | ↑                           | 74.4        | 2023Q2        | 4,387   |
| <b>Belgium</b>         | 66.5             | 66.6 | 66.8 | 65.1 | 66.7 | 66.8 | 66.3 | 66.8 | 66.7 | 67.1 | ↑                           | <b>67.1</b> | <b>2024Q4</b> | 5,016   |
| <b>Canada</b>          | 75.6             | 75.9 | 74.7 | 74.5 | 75.8 | 75.6 | 75.2 | 74.9 | 74.3 | 74.2 | →                           | 76.2        | 2023Q1        | 19,755  |
| <b>Chile</b>           | 61.9             | 62.9 | 64.1 | 63.9 | 62.8 | 63.3 | 64.0 | 64.8 | 64.1 | 63.7 | ↓                           | 64.8        | 2024Q2        | 8,682   |
| <b>Colombia</b>        | 61.6             | 63.0 | 62.9 | 64.8 | 63.7 | 62.1 | 62.2 | 63.3 | 63.2 | 62.8 | ↓                           | 67.8        | 2017Q2        | 21,765  |
| <b>Costa Rica</b>      | 60.1             | 58.6 | 61.0 | 61.6 | 58.2 | 58.1 | 60.2 | 59.6 | 62.3 | 61.9 | ↓                           | 63.3        | 2013Q4        | 2,137   |
| <b>Czechia</b>         | 75.5             | 75.1 | 75.4 | 75.0 | 75.1 | 75.1 | 75.2 | 75.4 | 75.5 | 75.6 | →                           | <b>75.6</b> | <b>2024Q4</b> | 5,016   |
| <b>Denmark</b>         | 76.8             | 76.6 | 77.2 | 75.3 | 76.3 | 76.8 | 77.2 | 77.5 | 77.2 | 76.9 | ↓                           | 77.8        | 2006Q4        | 2,908   |
| <b>Estonia</b>         | 76.4             | 76.2 | 75.7 | 76.1 | 76.1 | 75.8 | 75.5 | 76.6 | 75.7 | 75.1 | ↓                           | 76.8        | 2022Q4        | 651     |
| <b>Finland</b>         | 74.3             | 74.0 | 72.6 | 72.3 | 73.8 | 73.4 | 73.4 | 72.8 | 72.2 | 71.8 | ↓                           | 74.7        | 2022Q4        | 2,492   |
| <b>France</b>          | 68.1             | 68.5 | 69.0 | 66.7 | 68.3 | 68.4 | 68.7 | 69.0 | 69.2 | 68.9 | ↓                           | 69.2        | 2024Q3        | 28,401  |
| <b>Germany</b>         | 76.7             | 77.2 | 77.4 | 75.8 | 77.2 | 77.3 | 77.4 | 77.4 | 77.4 | 77.6 | ↑                           | <b>77.6</b> | <b>2024Q4</b> | 41,580  |
| <b>Greece</b>          | 60.7             | 61.8 | 63.3 | 56.3 | 61.7 | 62.1 | 62.9 | 63.6 | 62.9 | 63.8 | ↑                           | <b>63.8</b> | <b>2024Q4</b> | 4,161   |
| <b>Hungary</b>         | 74.5             | 74.9 | 75.1 | 70.4 | 74.9 | 75.2 | 75.1 | 75.1 | 75.1 | 75.1 | →                           | <b>75.2</b> | <b>2023Q4</b> | 4,565   |
| <b>Iceland</b>         | 83.3             | 83.7 | 85.3 | 83.6 | 83.3 | 84.0 | 84.0 | 85.3 | 86.4 | 85.6 | ↓                           | 87.0        | 2017Q1        | 217     |
| <b>Ireland</b>         | 73.3             | 74.0 | 74.5 | 69.6 | 73.9 | 74.0 | 74.2 | 74.6 | 74.9 | 74.2 | ↓                           | 74.9        | 2024Q3        | 2,654   |
| <b>Israel</b>          | 69.2             | 69.8 | 69.3 | 68.6 | 70.0 | 68.8 | 69.2 | 69.4 | 69.5 | 69.0 | ↓                           | 70.2        | 2023Q1        | 4,095   |
| <b>Italy</b>           | 60.2             | 61.5 | 62.2 | 59.0 | 61.4 | 62.1 | 62.1 | 62.0 | 62.5 | 62.2 | ↓                           | 62.5        | 2024Q3        | 23,181  |
| <b>Japan</b>           | 78.5             | 78.9 | 79.4 | 78.1 | 79.0 | 79.2 | 79.1 | 79.3 | 79.5 | 79.8 | ↑                           | <b>79.8</b> | <b>2024Q4</b> | 58,810  |
| <b>Korea</b>           | 68.5             | 69.2 | 69.5 | 67.0 | 69.4 | 69.5 | 69.5 | 69.5 | 69.6 | 69.6 | →                           | <b>69.6</b> | <b>2024Q4</b> | 24,687  |
| <b>Latvia</b>          | 71.3             | 71.5 | 71.2 | 72.6 | 71.9 | 71.2 | 71.1 | 71.6 | 71.4 | 70.4 | ↓                           | 72.8        | 2019Q3        | 815     |
| <b>Lithuania</b>       | 73.8             | 73.1 | 73.6 | 73.0 | 73.7 | 73.2 | 72.9 | 73.9 | 73.8 | 73.8 | →                           | 74.9        | 2022Q3        | 1,393   |
| <b>Luxembourg</b>      | 70.1             | 70.3 | 69.7 | 68.0 | 70.6 | 69.2 | 69.6 | 70.3 | 69.1 | 69.8 | ↑                           | 70.7        | 2023Q2        | 323     |
| <b>Mexico</b>          | 62.5             | 63.7 | 63.9 | 62.4 | 63.8 | 63.8 | 64.2 | 64.0 | 63.9 | 63.5 | ↓                           | 64.2        | 2024Q1        | 55,825  |
| <b>Netherlands</b>     | 81.8             | 82.4 | 82.3 | 79.8 | 82.5 | 82.5 | 82.4 | 82.5 | 82.3 | 82.3 | →                           | 82.5        | 2023Q4        | 9,412   |
| <b>New Zealand</b>     | 79.7             | 80.1 | 78.6 | 77.3 | 79.8 | 79.8 | 79.1 | 78.9 | 78.4 | 78.0 | ↓                           | 80.4        | 2023Q1        | 2,701   |
| <b>Norway</b>          | 77.7             | 77.4 | 77.1 | 75.4 | 77.6 | 77.3 | 77.1 | 77.1 | 77.1 | 77.0 | →                           | 78.1        | 2008Q3        | 2,771   |
| <b>Poland</b>          | 71.5             | 72.4 | 72.5 | 67.9 | 72.4 | 72.7 | 72.4 | 72.3 | 72.7 | 72.7 | →                           | <b>72.7</b> | <b>2024Q3</b> | 16,742  |
| <b>Portugal</b>        | 71.3             | 72.4 | 72.8 | 70.2 | 72.5 | 72.7 | 72.6 | 72.6 | 72.9 | 73.0 | ↑                           | <b>73.0</b> | <b>2024Q4</b> | 4,913   |
| <b>Slovak Republic</b> | 71.4             | 72.0 | 72.4 | 70.2 | 71.9 | 72.4 | 72.2 | 72.4 | 72.3 | 72.8 | ↑                           | <b>72.8</b> | <b>2024Q4</b> | 2,569   |
| <b>Slovenia</b>        | 73.1             | 72.5 | 73.2 | 70.9 | 72.6 | 72.7 | 74.0 | 73.1 | 72.7 | 72.8 | →                           | 74.0        | 2024Q1        | 981     |
| <b>Spain</b>           | 64.3             | 65.4 | 66.1 | 63.4 | 65.7 | 65.7 | 65.7 | 66.1 | 66.3 | 66.3 | →                           | <b>66.3</b> | <b>2024Q4</b> | 21,461  |
| <b>Sweden</b>          | 77.0             | 77.4 | 76.7 | 76.3 | 77.4 | 77.1 | 76.8 | 77.1 | 76.6 | 76.2 | ↓                           | 77.7        | 2023Q2        | 4,999   |
| <b>Switzerland</b>     | 80.1             | 80.7 | 80.4 | 80.7 | 80.4 | 80.8 | 80.4 | 80.4 | 80.2 | 80.4 | ↑                           | 80.8        | 2023Q4        | 4,685   |
| <b>Türkiye</b>         | 52.8             | 53.8 | 55.2 | 50.3 | 53.8 | 54.4 | 55.1 | 55.1 | 55.2 | 55.2 | →                           | <b>55.2</b> | <b>2024Q4</b> | 31,476  |
| <b>United Kingdom</b>  | 75.1             | 75.1 | 74.8 | 76.4 | 74.9 | 74.9 | 74.5 | 74.6 | 74.9 | 75.0 | →                           | 76.4        | 2019Q4        | 32,298  |
| <b>United States</b>   | 71.3             | 72.0 | 71.9 | 71.7 | 72.0 | 72.0 | 72.0 | 71.9 | 71.8 | 71.7 | →                           | 72.2        | 2006Q4        | 150,240 |

...: Not applicable ...: Not available b: break in time series

| Change from previous period (x) |         |   |                |
|---------------------------------|---------|---|----------------|
| ↑                               | x > 0.1 | → | -0.1 ≤ x ≤ 0.1 |
| ↓                               |         |   | x < -0.1       |

Note: figures in bold in the columns “record high since 2005” stress that the employment rate was at or within 0.1 percentage point of its highest level in the current quarter.

Source: OECD (2025) [Infra-annual Labour Statistics](#), [Employment rates](#) and [Employed population](#).

**Table 2 –Labour force participation rates (aged 15–64)**
*Percentage of the working age population, seasonally adjusted*

|                        | Labour force participation rates |      |      |      |      |      |      |      |      |      | Change from | Record high |               |
|------------------------|----------------------------------|------|------|------|------|------|------|------|------|------|-------------|-------------|---------------|
|                        | 2022                             | 2023 | 2024 | 2019 | 2023 |      | 2024 |      |      |      |             |             |               |
|                        |                                  |      |      | Q4   | Q3   | Q4   | Q1   | Q2   | Q3   | Q4   |             |             | since 2008    |
| <b>OECD</b>            | 73.1                             | 73.7 | 74.0 | 72.9 | 73.8 | 73.8 | 73.9 | 74.0 | 74.0 | 73.9 | →           | <b>74.0</b> | <b>2024Q3</b> |
| <b>G7</b>              | 75.6                             | 76.2 | 76.4 | 75.5 | 76.2 | 76.3 | 76.3 | 76.4 | 76.5 | 76.4 | →           | <b>76.5</b> | <b>2024Q3</b> |
| <b>European Union</b>  | 74.5                             | 75.0 | 75.4 | 73.0 | 75.0 | 75.2 | 75.3 | 75.4 | 75.4 | 75.3 | →           | <b>75.4</b> | <b>2024Q2</b> |
| <b>Euro area</b>       | 74.5                             | 75.0 | 75.4 | 74.1 | 75.0 | 75.2 | 75.4 | 75.4 | 75.4 | 75.3 | →           | <b>75.4</b> | <b>2024Q2</b> |
| <b>Australia</b>       | 80.0                             | 80.2 | 80.4 | 78.3 | 80.2 | 80.3 | 80.0 | 80.1 | 80.6 | 80.6 | →           | <b>80.6</b> | <b>2024Q3</b> |
| <b>Austria</b>         | 77.8                             | 78.2 | 78.2 | 77.3 | 78.3 | 78.1 | 78.0 | 78.3 | 78.2 | 78.3 | →           | <b>78.3</b> | <b>2023Q3</b> |
| <b>Belgium</b>         | 70.5                             | 70.5 | 70.8 | 68.8 | 70.6 | 70.7 | 70.4 | 70.6 | 70.9 | 71.4 | ↑           | <b>71.4</b> | <b>2024Q4</b> |
| <b>Canada</b>          | 79.8                             | 80.3 | 79.8 | 79.1 | 80.3 | 80.2 | 80.0 | 80.0 | 79.6 | 79.6 | →           | 80.4        | 2023Q1        |
| <b>Chile</b>           | 67.4                             | 69.0 | 70.2 | 69.4 | 69.0 | 69.7 | 70.2 | 70.7 | 70.3 | 69.8 | ↓           | 70.7        | 2024Q2        |
| <b>Colombia</b>        | 69.6                             | 70.3 | 70.2 | 72.7 | 70.7 | 69.6 | 70.0 | 70.7 | 70.3 | 69.8 | ↓           | 74.7        | 2017Q2        |
| <b>Costa Rica</b>      | 68.7                             | 64.5 | 66.1 | 70.7 | 63.4 | 62.8 | 65.4 | 65.4 | 66.9 | 66.6 | ↓           | 71.1        | 2020Q1        |
| <b>Czechia</b>         | 77.3                             | 77.2 | 77.5 | 76.7 | 77.1 | 77.2 | 77.3 | 77.4 | 77.6 | 77.7 | →           | <b>77.7</b> | <b>2024Q4</b> |
| <b>Denmark</b>         | 80.4                             | 80.8 | 82.4 | 79.2 | 80.5 | 81.5 | 82.1 | 82.6 | 82.7 | 82.3 | ↓           | 82.7        | 2024Q3        |
| <b>Estonia</b>         | 81.2                             | 81.7 | 82.2 | 79.5 | 82.4 | 81.3 | 81.9 | 83.0 | 82.2 | 81.6 | ↓           | 83.0        | 2024Q2        |
| <b>Finland</b>         | 79.8                             | 79.9 | 79.4 | 77.7 | 80.0 | 79.5 | 79.7 | 79.7 | 79.2 | 78.9 | ↓           | 80.3        | 2023Q2        |
| <b>France</b>          | 73.6                             | 73.9 | 74.5 | 72.7 | 73.8 | 74.1 | 74.4 | 74.6 | 74.8 | 74.4 | ↓           | 74.8        | 2024Q3        |
| <b>Germany</b>         | 79.3                             | 79.7 | 80.2 | 78.2 | 79.7 | 79.9 | 80.1 | 80.2 | 80.3 | 80.4 | →           | <b>80.4</b> | <b>2024Q4</b> |
| <b>Greece</b>          | 69.4                             | 69.5 | 70.5 | 68.3 | 69.7 | 69.5 | 70.7 | 70.7 | 69.9 | 70.6 | ↑           | <b>70.7</b> | <b>2024Q1</b> |
| <b>Hungary</b>         | 77.3                             | 78.2 | 78.6 | 72.9 | 78.1 | 78.7 | 78.6 | 78.6 | 78.7 | 78.6 | ↓           | <b>78.7</b> | <b>2024Q3</b> |
| <b>Iceland</b>         | 86.7                             | 86.9 | 88.6 | 86.7 | 86.7 | 87.3 | 87.9 | 88.1 | 89.8 | 88.7 | ↓           | 89.8        | 2024Q3        |
| <b>Ireland</b>         | 76.8                             | 77.5 | 77.9 | 73.2 | 77.4 | 77.5 | 77.6 | 78.1 | 78.3 | 77.6 | ↓           | 78.3        | 2024Q3        |
| <b>Israel</b>          | 71.9                             | 72.3 | 71.5 | 71.3 | 72.4 | 71.0 | 71.7 | 71.8 | 71.5 | 70.9 | ↓           | 73.0        | 2023Q1        |
| <b>Italy</b>           | 65.6                             | 66.7 | 66.6 | 65.4 | 66.7 | 67.1 | 67.0 | 66.7 | 66.6 | 66.2 | ↓           | 67.1        | 2023Q4        |
| <b>Japan</b>           | 80.7                             | 81.1 | 81.6 | 80.0 | 81.2 | 81.4 | 81.4 | 81.5 | 81.7 | 81.9 | ↑           | <b>81.9</b> | <b>2024Q4</b> |
| <b>Korea</b>           | 70.5                             | 71.1 | 71.5 | 69.6 | 71.3 | 71.4 | 71.5 | 71.5 | 71.4 | 71.6 | ↑           | <b>71.6</b> | <b>2024Q4</b> |
| <b>Latvia</b>          | 76.8                             | 76.7 | 76.7 | 77.4 | 77.1 | 76.7 | 76.9 | 77.1 | 77.0 | 76.0 | →           | 78.4        | 2020Q2        |
| <b>Lithuania</b>       | 78.6                             | 78.8 | 79.5 | 78.4 | 79.3 | 79.1 | 79.0 | 79.9 | 79.8 | 79.3 | ↓           | 80.0        | 2022Q3        |
| <b>Luxembourg</b>      | 73.5                             | 74.2 | 74.5 | 72.1 | 74.7 | 73.2 | 74.0 | 74.8 | 74.3 | 74.9 | ↑           | <b>74.9</b> | <b>2024Q4</b> |
| <b>Mexico</b>          | 64.7                             | 65.6 | 65.7 | 64.7 | 65.7 | 65.7 | 66.1 | 65.8 | 65.8 | 65.3 | ↓           | 66.1        | 2024Q1        |
| <b>Netherlands</b>     | 84.7                             | 85.4 | 85.5 | 83.5 | 85.6 | 85.5 | 85.5 | 85.6 | 85.5 | 85.4 | →           | 85.6        | 2023Q3        |
| <b>New Zealand</b>     | 82.5                             | 83.3 | 82.7 | 80.8 | 83.2 | 83.2 | 82.8 | 82.9 | 82.6 | 82.4 | ↓           | 83.5        | 2023Q2        |
| <b>Norway</b>          | 80.4                             | 80.4 | 80.4 | 78.6 | 80.5 | 80.4 | 80.4 | 80.4 | 80.3 | 80.4 | →           | 80.6        | 2022Q1        |
| <b>Poland</b>          | 73.7                             | 74.5 | 74.7 | 70.0 | 74.5 | 74.9 | 74.6 | 74.5 | 75.0 | 74.8 | →           | 75.0        | 2024Q3        |
| <b>Portugal</b>        | 76.2                             | 77.6 | 78.0 | 75.3 | 77.5 | 77.9 | 77.7 | 77.8 | 78.0 | 78.3 | ↑           | <b>78.3</b> | <b>2024Q4</b> |
| <b>Slovak Republic</b> | 76.1                             | 76.5 | 76.6 | 74.6 | 76.4 | 76.8 | 76.5 | 76.6 | 76.4 | 76.9 | ↑           | <b>76.9</b> | <b>2024Q4</b> |
| <b>Slovenia</b>        | 76.2                             | 75.2 | 75.9 | 74.0 | 75.2 | 75.4 | 76.6 | 75.8 | 75.6 | 75.5 | →           | 76.6        | 2024Q1        |
| <b>Spain</b>           | 74.0                             | 74.5 | 74.6 | 73.8 | 74.7 | 74.6 | 74.5 | 74.8 | 74.8 | 74.4 | ↓           | 74.8        | 2024Q2        |
| <b>Sweden</b>          | 83.4                             | 84.0 | 83.8 | 82.4 | 84.1 | 83.9 | 83.9 | 84.2 | 83.9 | 83.3 | ↓           | 84.2        | 2024Q2        |
| <b>Switzerland</b>     | 83.6                             | 84.1 | 84.1 | 84.2 | 83.9 | 84.4 | 83.9 | 84.1 | 84.2 | 84.3 | →           | 84.7        | 2020Q4        |
| <b>Türkiye</b>         | 59.2                             | 59.6 | 60.6 | 58.2 | 59.4 | 59.8 | 60.5 | 60.6 | 60.6 | 60.6 | →           | <b>60.6</b> | <b>2024Q3</b> |
| <b>United Kingdom</b>  | 78.1                             | 78.3 | 78.2 | 79.4 | 78.2 | 77.9 | 77.9 | 77.9 | 78.4 | 78.5 | →           | 79.4        | 2019Q4        |
| <b>United States</b>   | 74.0                             | 74.7 | 74.9 | 74.4 | 74.8 | 74.9 | 74.9 | 74.9 | 75.0 | 74.9 | →           | 75.3        | 2008Q2        |

...: Not available b: break in time series

| Change from previous period (x) |                |   |
|---------------------------------|----------------|---|
| ↑                               | x > 0.1        | → |
| ↓                               | -0.1 ≤ x ≤ 0.1 | ↓ |
|                                 | x < -0.1       |   |

Note: figures in bold in the columns "record high since 2005" stress that the employment rate was at or within 0.1 percentage point of its highest level in the current quarter.

Source: OECD (2025) [Infra-annual Labour Statistics](#) and [Labour force participation rates](#).

**Table 3 – Unemployment rates (aged 15 and over)**
*Percentage of labour force, seasonally adjusted*

|                       | 2023 | 2024 | 2023 | 2024 |      |      |      | 2020 | 2024 |      |      |      |      | 2025 |            | Change from previous period | Record low since 2001 |               |
|-----------------------|------|------|------|------|------|------|------|------|------|------|------|------|------|------|------------|-----------------------------|-----------------------|---------------|
|                       |      |      | Q4   | Q1   | Q2   | Q3   | Q4   | Feb  | Sep  | Oct  | Nov  | Dec  | Jan  | Feb  | since 2001 |                             |                       |               |
| <b>OECD</b>           | 4.8  | 4.9  | 4.9  | 4.9  | 4.9  | 4.9  | 4.9  | 5.3  | 4.9  | 4.9  | 4.9  | 4.9  | 4.9  | 4.8  | 4.8        | →                           | <b>4.8</b>            | <b>Jun-23</b> |
| <b>G7</b>             | 4.1  | 4.3  | 4.2  | 4.2  | 4.3  | 4.3  | 4.3  | 4.2  | 4.3  | 4.3  | 4.3  | 4.3  | 4.3  | 4.3  | 4.3        | →                           | 3.9                   | Dec-22        |
| <b>European Union</b> | 6.0  | 5.9  | 6.1  | 6.1  | 6.0  | 5.9  | 5.8  | 6.6  | 5.9  | 5.8  | 5.8  | 5.8  | 5.8  | 5.8  | 5.7        | →                           | <b>5.7</b>            | <b>Feb-25</b> |
| <b>Euro area</b>      | 6.6  | 6.4  | 6.5  | 6.5  | 6.4  | 6.3  | 6.2  | 7.3  | 6.3  | 6.2  | 6.2  | 6.2  | 6.2  | 6.2  | 6.1        | →                           | <b>6.1</b>            | <b>Feb-25</b> |
| Australia             | 3.7  | 4.0  | 3.9  | 3.9  | 4.0  | 4.1  | 4.0  | 5.1  | 4.1  | 4.1  | 3.9  | 4.0  | 4.1  | 4.1  | →          | 3.4                         | Oct-22                |               |
| Austria               | 5.1  | 5.2  | 5.2  | 4.9  | 5.1  | 5.4  | 5.4  | 4.6  | 5.6  | 5.7  | 5.1  | 5.4  | 5.4  | 5.3  | →          | 3.6                         | Jan-01                |               |
| Belgium               | 5.5  | 5.7  | 5.5  | 5.7  | 5.6  | 5.6  | 5.9  | 5.0  | 5.7  | 5.8  | 5.9  | 6.0  | 5.8  | 5.9  | →          | 4.9                         | Apr-20                |               |
| Canada                | 5.4  | 6.4  | 5.7  | 5.9  | 6.3  | 6.6  | 6.7  | 5.8  | 6.6  | 6.6  | 6.9  | 6.7  | 6.6  | 6.6  | →          | 4.8                         | Jul-22                |               |
| Chile                 | 8.7  | 8.5  | 9.0  | 8.6  | 8.1  | 8.5  | 8.6  | 8.2  | 8.5  | 8.5  | 8.6  | 8.4  | 8.6  | ..   | ↑          | 5.6                         | Jul-13                |               |
| Colombia              | 10.2 | 10.2 | 10.5 | 10.8 | 10.2 | 9.9  | 9.8  | 11.2 | 9.7  | 10.0 | 9.4  | 9.9  | 9.7  | 9.5  | ↓          | 8.5                         | Nov-15                |               |
| Costa Rica            | 8.9  | 7.5  | 7.3  | 7.8  | 8.5  | 6.6  | 6.9  | 12.5 | 7.0  | 7.3  | 6.9  | 7.0  | 7.4  | ..   | ↑          | 6.6                         | Aug-24                |               |
| Czechia               | 2.6  | 2.8  | 2.8  | 2.8  | 2.7  | 2.7  | 2.7  | 1.8  | 2.8  | 2.6  | 2.8  | 2.7  | 2.4  | 2.7  | ↑          | 1.8                         | Feb-19                |               |
| Denmark               | 5.1  | 6.2  | 6.0  | 5.8  | 6.1  | 6.2  | 6.6  | 5.3  | 6.6  | 5.9  | 6.8  | 7.0  | 6.7  | 5.7  | ↓          | 3.2                         | Jan-08                |               |
| Estonia               | 6.4  | 7.6  | 6.5  | 7.5  | 7.5  | 7.9  | 7.6  | 4.9  | 8.1  | 7.5  | 7.6  | 7.8  | 7.7  | 7.7  | →          | 3.9                         | May-08                |               |
| Finland               | 7.2  | 8.4  | 7.6  | 8.0  | 8.3  | 8.5  | 8.8  | 6.7  | 8.6  | 8.9  | 8.9  | 8.7  | 9.0  | 9.2  | ↑          | 5.7                         | Apr-08                |               |
| France                | 7.4  | 7.4  | 7.6  | 7.5  | 7.4  | 7.4  | 7.3  | 7.8  | 7.4  | 7.4  | 7.3  | 7.3  | 7.3  | 7.4  | →          | 6.9                         | Feb-08                |               |
| Germany               | 3.0  | 3.4  | 3.1  | 3.3  | 3.4  | 3.5  | 3.4  | 3.3  | 3.5  | 3.4  | 3.4  | 3.5  | 3.5  | 3.5  | →          | 2.9                         | May-19                |               |
| Greece                | 11.1 | 10.1 | 10.5 | 11.3 | 10.0 | 9.6  | 9.5  | 16.4 | 9.6  | 9.7  | 9.5  | 9.4  | 9.1  | 8.6  | ↓          | 7.4                         | May-08                |               |
| Hungary               | 4.1  | 4.4  | 4.3  | 4.3  | 4.3  | 4.4  | 4.5  | 3.2  | 4.5  | 4.5  | 4.5  | 4.4  | 4.3  | 4.3  | →          | 3.0                         | Jun-19                |               |
| Iceland               | 3.4  | 3.4  | 3.5  | 3.5  | 3.3  | 3.3  | 3.4  | 4.8  | 3.3  | 3.4  | 3.4  | 3.5  | 3.6  | ..   | →          | 2.7                         | Mar-07                |               |
| Ireland               | 4.3  | 4.3  | 4.4  | 4.3  | 4.4  | 4.3  | 4.3  | 4.8  | 4.2  | 4.2  | 4.2  | 4.4  | 4.0  | 3.9  | →          | <b>3.9</b>                  | <b>Mar-01</b>         |               |
| Israel                | 3.4  | 3.0  | 3.0  | 3.3  | 3.3  | 2.7  | 2.7  | 3.4  | 2.7  | 2.6  | 2.7  | 2.7  | 2.6  | ..   | →          | 2.6                         | Aug-24                |               |
| Italy                 | 7.7  | 6.5  | 7.5  | 7.1  | 6.7  | 6.3  | 6.1  | 9.5  | 6.2  | 6.0  | 6.0  | 6.3  | 6.2  | 5.9  | ↓          | <b>5.8</b>                  | <b>Nov-24</b>         |               |
| Japan                 | 2.6  | 2.6  | 2.6  | 2.6  | 2.6  | 2.5  | 2.5  | 2.4  | 2.4  | 2.5  | 2.5  | 2.5  | 2.5  | 2.4  | →          | 2.2                         | May-18                |               |
| Korea                 | 2.7  | 2.8  | 2.8  | 2.8  | 2.8  | 2.5  | 3.0  | 3.4  | 2.5  | 2.7  | 2.7  | 3.7  | 2.9  | 2.7  | ↓          | 2.5                         | Aug-24                |               |
| Latvia                | 6.5  | 6.9  | 6.9  | 6.9  | 6.9  | 6.8  | 7.0  | 7.3  | 6.8  | 7.0  | 7.0  | 6.9  | 7.0  | 6.9  | →          | 5.3                         | Oct-07                |               |
| Lithuania             | 6.9  | 7.1  | 7.3  | 7.4  | 7.2  | 7.4  | 6.6  | 7.4  | 7.2  | 6.9  | 6.5  | 6.4  | 6.6  | 6.6  | →          | 4.0                         | Nov-07                |               |
| Luxembourg            | 5.2  | 6.2  | 5.7  | 6.0  | 6.2  | 6.3  | 6.4  | 5.8  | 6.3  | 6.4  | 6.5  | 6.4  | 6.4  | 6.5  | →          | 1.8                         | May-01                |               |
| Mexico                | 2.8  | 2.7  | 2.8  | 2.6  | 2.7  | 2.7  | 2.6  | 3.6  | 2.7  | 2.5  | 2.7  | 2.6  | 2.6  | 2.6  | →          | 2.3                         | Aug-01                |               |
| Netherlands           | 3.5  | 3.7  | 3.6  | 3.6  | 3.6  | 3.7  | 3.7  | 4.0  | 3.7  | 3.7  | 3.7  | 3.7  | 3.8  | 3.8  | →          | 3.1                         | Apr-01                |               |
| New Zealand           | 3.7  | 4.7  | 4.0  | 4.4  | 4.6  | 4.8  | 5.1  | ...  | ...  | ...  | ...  | ...  | ...  | ...  | ↑          | 3.2                         | Q4-21                 |               |
| Norway                | 3.6  | 4.0  | 3.7  | 4.0  | 4.2  | 3.9  | 4.0  | 3.6  | 4.0  | 4.0  | 3.7  | 4.2  | 3.7  | 3.8  | →          | 2.4                         | Sep-07                |               |
| Poland                | 2.8  | 2.9  | 3.0  | 2.9  | 2.9  | 3.0  | 2.8  | 2.8  | 3.0  | 2.9  | 2.8  | 2.7  | 2.6  | 2.6  | →          | <b>2.6</b>                  | <b>Jan-23</b>         |               |
| Portugal              | 6.6  | 6.5  | 6.5  | 6.4  | 6.5  | 6.5  | 6.5  | 6.5  | 6.5  | 6.6  | 6.6  | 6.4  | 6.3  | 6.4  | →          | 5.1                         | Jan-01                |               |
| Slovak Republic       | 5.9  | 5.4  | 5.6  | 5.6  | 5.4  | 5.3  | 5.2  | 6.0  | 5.2  | 5.2  | 5.2  | 5.1  | 5.1  | 5.0  | →          | <b>5.0</b>                  | <b>Sep-24</b>         |               |
| Slovenia              | 3.7  | 3.7  | 3.5  | 3.4  | 3.5  | 4.1  | 3.6  | 4.3  | 4.1  | 3.9  | 3.6  | 3.4  | 3.3  | 3.2  | →          | <b>3.2</b>                  | <b>Jan-24</b>         |               |
| Spain                 | 12.2 | 11.4 | 11.9 | 11.8 | 11.6 | 11.3 | 10.7 | 13.6 | 11.1 | 10.9 | 10.7 | 10.6 | 10.5 | 10.4 | →          | 7.9                         | May-07                |               |
| Sweden                | 7.7  | 8.4  | 8.1  | 8.2  | 8.3  | 8.5  | 8.5  | 7.8  | 8.7  | 8.4  | 8.4  | 8.6  | 9.7  | 8.9  | ↓          | 5.6                         | Jun-02                |               |
| Switzerland           | 4.0  | 4.3  | 4.1  | 4.1  | 4.3  | 4.5  | 4.5  | ...  | ...  | ...  | ...  | ...  | ...  | ...  | →          | 3.9                         | Q2-23                 |               |
| Türkiye               | 9.4  | 8.7  | 8.8  | 8.8  | 8.8  | 8.7  | 8.6  | 12.6 | 8.7  | 8.8  | 8.5  | 8.4  | 8.4  | 8.2  | ↓          | 8.0                         | Jun-12                |               |
| United Kingdom        | 4.1  | 4.3  | 3.9  | 4.3  | 4.2  | 4.3  | 4.4  | 4.1  | 4.3  | 4.4  | 4.4  | 4.4  | 4.4  | ..   | →          | 3.6                         | Jun-22                |               |
| United States         | 3.6  | 4.0  | 3.8  | 3.8  | 4.0  | 4.2  | 4.1  | 3.5  | 4.1  | 4.1  | 4.2  | 4.1  | 4.0  | 4.1  | →          | 3.4                         | Jan-23                |               |

...: Not applicable ..: Not available

| Change from previous period (x) |         |   |                  |
|---------------------------------|---------|---|------------------|
| ↑                               | x > 0.1 | → | -0.1 =< x <= 0.1 |
| ↓                               |         |   | x < -0.1         |

Change between January and February 2025 except for Chile, Costa Rica, Iceland, Israel and the United Kingdom where the change is reported between December 2024 and January 2025; for New Zealand and Switzerland, change between third and fourth quarter 2024.

Note: figures in bold in the columns “record low since 2001” stress that the unemployment rate was at or within 0.1 percentage point of its lowest level in the current month.

Source: OECD (2025) [Infra-annual Labour Statistics](#) and [Monthly unemployment rates](#).

**Table 4 – Unemployment levels (aged 15 and over)***Thousands of persons, seasonally adjusted*

|                        | 2023   | 2024   | 2024   |        |        |        | 2024   |        | 2025   |        |
|------------------------|--------|--------|--------|--------|--------|--------|--------|--------|--------|--------|
|                        |        |        | Q1     | Q2     | Q3     | Q4     | Nov    | Dec    | Jan    | Feb    |
| <b>OECD</b>            | 33,399 | 34,252 | 34,092 | 34,289 | 34,416 | 34,223 | 34,194 | 34,300 | 34,029 | 33,795 |
| <b>G7</b>              | 15,977 | 16,929 | 16,547 | 16,869 | 17,202 | 17,158 | 17,299 | 17,080 | 17,058 | 17,159 |
| <b>European Union</b>  | 13,181 | 13,072 | 13,307 | 13,150 | 13,058 | 12,809 | 12,764 | 12,815 | 12,808 | 12,677 |
| <b>Euro area</b>       | 11,157 | 10,943 | 11,187 | 11,053 | 10,889 | 10,680 | 10,631 | 10,680 | 10,650 | 10,580 |
| <b>Australia</b>       | 538    | 601    | 575    | 603    | 622    | 605    | 593    | 601    | 624    | 613    |
| <b>Austria</b>         | 241    | 244    | 230    | 242    | 253    | 253    | 239    | 253    | 259    | 247    |
| <b>Belgium</b>         | 294    | 306    | 303    | 297    | 301    | 319    | 319    | 324    | 318    | 322    |
| <b>Canada</b>          | 1,158  | 1,404  | 1,290  | 1,389  | 1,454  | 1,507  | 1,541  | 1,506  | 1,491  | 1,473  |
| <b>Chile</b>           | 862    | 859    | 872    | 832    | 867    | 866    | 866    | 856    | 878    | ..     |
| <b>Colombia</b>        | 2,576  | 2,605  | 2,747  | 2,629  | 2,534  | 2,509  | 2,416  | 2,545  | 2,520  | 2,465  |
| <b>Costa Rica</b>      | 205    | 177    | 183    | 201    | 159    | 165    | 165    | 168    | 177    | ..     |
| <b>Czechia</b>         | 138    | 144    | 147    | 141    | 141    | 140    | 147    | 139    | 129    | 145    |
| <b>Denmark</b>         | 162    | 202    | 190    | 200    | 203    | 214    | 219    | 231    | 222    | 186    |
| <b>Estonia</b>         | 48     | 57     | 56     | 57     | 60     | 57     | 57     | 58     | 58     | 57     |
| <b>Finland</b>         | 204    | 238    | 227    | 236    | 241    | 251    | 253    | 246    | 255    | 261    |
| <b>France</b>          | 2,263  | 2,310  | 2,324  | 2,304  | 2,320  | 2,283  | 2,287  | 2,265  | 2,277  | 2,327  |
| <b>Germany</b>         | 1,335  | 1,516  | 1,455  | 1,529  | 1,547  | 1,544  | 1,543  | 1,551  | 1,560  | 1,565  |
| <b>Greece</b>          | 522    | 480    | 537    | 474    | 454    | 452    | 451    | 442    | 427    | 405    |
| <b>Hungary</b>         | 200    | 215    | 211    | 213    | 217    | 220    | 223    | 215    | 210    | 212    |
| <b>Iceland</b>         | 8      | 8      | 8      | 8      | 8      | 8      | 8      | 8      | 8      | ..     |
| <b>Ireland</b>         | 120    | 123    | 121    | 125    | 123    | 124    | 122    | 128    | 116    | 111    |
| <b>Israel</b>          | 153    | 134    | 147    | 148    | 121    | 119    | 121    | 120    | 118    | ..     |
| <b>Italy</b>           | 1,952  | 1,666  | 1,817  | 1,728  | 1,601  | 1,555  | 1,525  | 1,607  | 1,596  | 1,517  |
| <b>Japan</b>           | 1,783  | 1,763  | 1,780  | 1,793  | 1,750  | 1,723  | 1,730  | 1,720  | 1,740  | 1,680  |
| <b>Korea</b>           | 787    | 823    | 820    | 820    | 737    | 893    | 792    | 1,098  | 853    | 804    |
| <b>Latvia</b>          | 61     | 65     | 66     | 66     | 64     | 65     | 65     | 65     | 65     | 65     |
| <b>Lithuania</b>       | 105    | 112    | 116    | 113    | 116    | 103    | 102    | 99     | 105    | 102    |
| <b>Luxembourg</b>      | 18     | 21     | 20     | 21     | 22     | 22     | 22     | 22     | 22     | 23     |
| <b>Mexico</b>          | 1,693  | 1,636  | 1,607  | 1,662  | 1,683  | 1,594  | 1,666  | 1,610  | 1,595  | 1,578  |
| <b>Netherlands</b>     | 359    | 372    | 373    | 371    | 374    | 374    | 372    | 373    | 386    | 392    |
| <b>New Zealand</b>     | 114    | 145    | 134    | 143    | 148    | 156    | ...    | ...    | ...    | ...    |
| <b>Norway</b>          | 107    | 121    | 119    | 125    | 119    | 120    | 113    | 125    | 113    | 116    |
| <b>Poland</b>          | 502    | 512    | 519    | 510    | 529    | 489    | 488    | 474    | 466    | 466    |
| <b>Portugal</b>        | 353    | 351    | 348    | 349    | 350    | 356    | 360    | 350    | 349    | 354    |
| <b>Slovak Republic</b> | 162    | 148    | 154    | 150    | 145    | 142    | 142    | 142    | 141    | 140    |
| <b>Slovenia</b>        | 38     | 38     | 36     | 36     | 42     | 38     | 38     | 35     | 34     | 34     |
| <b>Spain</b>           | 2,938  | 2,771  | 2,872  | 2,829  | 2,755  | 2,625  | 2,618  | 2,602  | 2,566  | 2,544  |
| <b>Sweden</b>          | 437    | 479    | 468    | 474    | 488    | 484    | 479    | 494    | 561    | 513    |
| <b>Switzerland</b>     | 204    | 221    | 208    | 217    | 231    | 229    | ...    | ...    | ...    | ...    |
| <b>Türkiye</b>         | 3,275  | 3,115  | 3,131  | 3,129  | 3,106  | 3,073  | 3,055  | 3,013  | 2,981  | 2,886  |
| <b>United Kingdom</b>  | 1,406  | 1,509  | 1,513  | 1,467  | 1,507  | 1,552  | 1,552  | 1,545  | 1,574  | ..     |
| <b>United States</b>   | 6,080  | 6,761  | 6,369  | 6,659  | 7,023  | 6,993  | 7,121  | 6,886  | 6,849  | 7,052  |

...: Not applicable ..: Not available

Source: OECD (2025) [Infra-annual Labour Statistics](#) and [Monthly unemployment levels](#).

**Table 5 – Unemployment rates by sex (aged 15 and over)**
*Percentage of the labour force of each group, seasonally adjusted*

|                        | Women |      |      |      |      |      |      | Men  |      |      |     |      |      |     | Gender Gap*<br>(last period available) |
|------------------------|-------|------|------|------|------|------|------|------|------|------|-----|------|------|-----|--|
|                        | 2023  | 2024 | 2024 |      | 2024 | 2025 |      | 2023 | 2024 | 2024 |     | 2024 | 2025 |     |  |
|                        |       |      | Q3   | Q4   |      | Dec  | Jan  |      |      | Feb  | Q3  |      | Q4   | Dec |  |
| <b>OECD</b>            | 5.0   | 5.1  | 5.1  | 5.1  | 5.2  | 5.1  | 5.0  | 4.7  | 4.8  | 4.8  | 4.7 | 4.7  | 4.6  | 4.7 | 0.4                                    |
| <b>G7</b>              | 3.9   | 4.2  | 4.2  | 4.2  | 4.3  | 4.2  | 4.2  | 4.2  | 4.4  | 4.4  | 4.4 | 4.3  | 4.3  | 4.3 | -0.1                                   |
| <b>European Union</b>  | 6.4   | 6.2  | 6.1  | 6.0  | 6.0  | 6.0  | 6.0  | 5.8  | 5.7  | 5.8  | 5.6 | 5.6  | 5.6  | 5.5 | 0.5                                    |
| <b>Euro area</b>       | 6.9   | 6.6  | 6.5  | 6.4  | 6.4  | 6.4  | 6.4  | 6.2  | 6.1  | 6.1  | 6.0 | 6.0  | 6.0  | 5.9 | 0.5                                    |
| <b>Australia</b>       | 3.6   | 3.9  | 4.0  | 3.9  | 3.8  | 4.1  | 3.8  | 3.8  | 4.1  | 4.3  | 4.1 | 4.1  | 4.1  | 4.2 | -0.4                                   |
| <b>Austria</b>         | 4.9   | 4.7  | 4.7  | 5.0  | 5.0  | 5.2  | 5.0  | 5.3  | 5.6  | 6.0  | 5.7 | 5.7  | 5.6  | 5.5 | -0.5                                   |
| <b>Belgium</b>         | 5.1   | 5.2  | 5.2  | 5.5  | 5.5  | 5.4  | 5.5  | 6.0  | 6.1  | 6.0  | 6.3 | 6.3  | 6.2  | 6.3 | -0.8                                   |
| <b>Canada</b>          | 5.2   | 6.0  | 6.1  | 6.3  | 6.4  | 6.4  | 6.2  | 5.5  | 6.7  | 7.0  | 7.1 | 7.0  | 6.8  | 6.9 | -0.7                                   |
| <b>Chile</b>           | 9.1   | 9.3  | 9.3  | 9.9  | 9.5  | 9.3  | ..   | 8.4  | 7.8  | 7.9  | 7.6 | 7.7  | 8.1  | ..  | 1.2                                    |
| <b>Colombia</b>        | 12.8  | 12.7 | 12.5 | 12.2 | 12.6 | 12.9 | 12.0 | 8.2  | 8.3  | 7.9  | 7.9 | 7.7  | 7.2  | 7.5 | 4.5                                    |
| <b>Costa Rica</b>      | 10.8  | 8.4  | 7.6  | 7.4  | 7.7  | 9.0  | ..   | 7.7  | 6.8  | 5.9  | 6.5 | 6.5  | 6.4  | ..  | 2.6                                    |
| <b>Czechia</b>         | 3.1   | 3.3  | 3.2  | 3.3  | 3.3  | 2.7  | 3.4  | 2.2  | 2.4  | 2.3  | 2.2 | 2.2  | 2.2  | 2.2 | 1.2                                    |
| <b>Denmark</b>         | 5.3   | 6.5  | 6.6  | 6.9  | 7.1  | 6.9  | 6.6  | 5.0  | 5.9  | 5.9  | 6.2 | 6.9  | 6.6  | 4.9 | 1.7                                    |
| <b>Estonia</b>         | 6.6   | 7.6  | 7.8  | 7.1  | 7.1  | 7.6  | 7.6  | 6.2  | 7.6  | 8.0  | 8.1 | 8.5  | 7.8  | 7.7 | -0.1                                   |
| <b>Finland</b>         | 6.5   | 7.6  | 7.5  | 8.3  | 8.2  | 8.1  | 8.8  | 7.9  | 9.2  | 9.4  | 9.3 | 9.1  | 9.8  | 9.5 | -0.7                                   |
| <b>France</b>          | 7.2   | 7.2  | 7.1  | 7.1  | 7.1  | 7.0  | 7.1  | 7.5  | 7.6  | 7.7  | 7.5 | 7.5  | 7.5  | 7.7 | -0.6                                   |
| <b>Germany</b>         | 2.8   | 3.2  | 3.2  | 3.2  | 3.2  | 3.2  | 3.2  | 3.2  | 3.6  | 3.7  | 3.7 | 3.7  | 3.7  | 3.7 | -0.5                                   |
| <b>Greece</b>          | 14.3  | 12.8 | 12.1 | 12.1 | 11.9 | 11.5 | 11.3 | 8.5  | 8.0  | 7.6  | 7.4 | 7.3  | 7.2  | 6.4 | 4.9                                    |
| <b>Hungary</b>         | 4.1   | 4.3  | 4.3  | 4.5  | 4.4  | 4.2  | 4.3  | 4.1  | 4.4  | 4.5  | 4.5 | 4.4  | 4.3  | 4.3 | 0.0                                    |
| <b>Iceland</b>         | 2.9   | 3.1  | 3.0  | 3.1  | 3.2  | 3.2  | ..   | 3.8  | 3.6  | 3.5  | 3.7 | 3.8  | 3.9  | ..  | -0.7                                   |
| <b>Ireland</b>         | 4.2   | 4.3  | 4.4  | 4.0  | 4.0  | 4.0  | 3.9  | 4.4  | 4.3  | 4.2  | 4.5 | 4.8  | 4.0  | 3.8 | 0.1                                    |
| <b>Israel</b>          | 3.2   | 2.8  | 2.6  | 2.5  | 2.5  | 2.6  | ..   | 3.6  | 3.1  | 2.7  | 2.7 | 2.8  | 2.6  | ..  | 0.0                                    |
| <b>Italy</b>           | 8.8   | 7.3  | 6.9  | 6.8  | 7.1  | 7.1  | 6.8  | 6.8  | 5.9  | 5.8  | 5.5 | 5.6  | 5.5  | 5.2 | 1.6                                    |
| <b>Japan</b>           | 2.4   | 2.4  | 2.4  | 2.4  | 2.5  | 2.3  | 2.3  | 2.8  | 2.6  | 2.6  | 2.6 | 2.5  | 2.6  | 2.5 | -0.2                                   |
| <b>Korea</b>           | 2.8   | 2.9  | 2.6  | 3.3  | 4.4  | 3.0  | 2.6  | 2.7  | 2.8  | 2.5  | 2.8 | 3.1  | 2.8  | 2.8 | -0.2                                   |
| <b>Latvia</b>          | 5.4   | 5.8  | 5.5  | 5.6  | 5.5  | 5.3  | 5.3  | 7.6  | 8.0  | 8.2  | 8.4 | 8.4  | 8.6  | 8.6 | -3.3                                   |
| <b>Lithuania</b>       | 6.4   | 6.5  | 6.5  | 5.8  | 5.7  | 5.6  | 5.4  | 7.3  | 7.8  | 8.3  | 7.3 | 7.0  | 7.6  | 7.7 | -2.3                                   |
| <b>Luxembourg</b>      | 5.4   | 6.1  | 6.2  | 6.3  | 6.3  | 6.3  | 6.3  | 5.1  | 6.3  | 6.5  | 6.5 | 6.5  | 6.6  | 6.7 | -0.4                                   |
| <b>Mexico</b>          | 2.8   | 2.7  | 2.7  | 2.6  | 2.5  | 2.8  | 2.6  | 2.8  | 2.7  | 2.7  | 2.6 | 2.7  | 2.5  | 2.6 | 0.0                                    |
| <b>Netherlands</b>     | 3.8   | 3.9  | 3.9  | 3.9  | 3.9  | 4.0  | 4.0  | 3.4  | 3.5  | 3.5  | 3.5 | 3.5  | 3.6  | 3.7 | 0.3                                    |
| <b>New Zealand</b>     | 4.0   | 4.9  | 5.0  | 5.2  | ...  | ...  | ...  | 3.5  | 4.6  | 4.7  | 4.9 | ...  | ...  | ... | 0.3                                    |
| <b>Norway</b>          | 3.5   | 3.8  | 3.7  | 3.8  | 4.0  | 3.6  | 3.7  | 3.7  | 4.2  | 4.1  | 4.1 | 4.3  | 3.9  | 4.0 | -0.3                                   |
| <b>Poland</b>          | 2.9   | 3.1  | 3.3  | 3.0  | 2.9  | 2.8  | 2.8  | 2.8  | 2.7  | 2.7  | 2.5 | 2.5  | 2.4  | 2.4 | 0.4                                    |
| <b>Portugal</b>        | 6.9   | 6.9  | 6.7  | 6.7  | 6.5  | 6.6  | 6.7  | 6.2  | 6.1  | 6.2  | 6.3 | 6.2  | 6.1  | 6.2 | 0.5                                    |
| <b>Slovak Republic</b> | 6.0   | 5.9  | 5.9  | 5.8  | 5.8  | 5.8  | 5.7  | 5.8  | 4.8  | 4.7  | 4.6 | 4.5  | 4.5  | 4.5 | 1.2                                    |
| <b>Slovenia</b>        | 3.7   | 4.0  | 4.2  | 4.3  | 4.2  | 4.0  | 3.9  | 3.6  | 3.5  | 4.0  | 3.1 | 2.8  | 2.7  | 2.7 | 1.2                                    |
| <b>Spain</b>           | 13.9  | 12.7 | 12.5 | 12.0 | 11.9 | 11.7 | 11.6 | 10.7 | 10.2 | 10.2 | 9.6 | 9.5  | 9.3  | 9.2 | 2.4                                    |
| <b>Sweden</b>          | 7.9   | 8.5  | 8.7  | 8.8  | 8.9  | 9.9  | 9.1  | 7.5  | 8.3  | 8.4  | 8.2 | 8.3  | 9.5  | 8.8 | 0.3                                    |
| <b>Switzerland</b>     | 4.3   | 4.6  | 4.8  | 4.8  | ...  | ...  | ...  | 3.8  | 4.1  | 4.3  | 4.2 | ...  | ...  | ... | 0.6                                    |
| <b>Türkiye</b>         | 12.7  | 11.8 | 12.0 | 11.8 | 11.4 | 11.9 | 11.0 | 7.7  | 7.1  | 6.9  | 6.9 | 6.9  | 6.6  | 6.7 | 4.3                                    |
| <b>United Kingdom</b>  | 3.7   | 4.1  | 4.1  | 4.2  | 4.3  | 4.2  | ..   | 4.4  | 4.5  | 4.5  | 4.6 | 4.4  | 4.6  | ..  | -0.4                                   |
| <b>United States</b>   | 3.5   | 3.9  | 4.0  | 4.1  | 4.1  | 4.0  | 4.1  | 3.8  | 4.1  | 4.3  | 4.2 | 4.1  | 4.0  | 4.2 | -0.1                                   |

...: Not applicable ..: Not available

\* Gender gap is calculated as the difference in percentage point between the unemployment rate for women and men. A positive figure indicates that the unemployment rate for women is higher than for men while a negative figure indicates that the unemployment rate for women is lower than for men.

Source: OECD (2025) [Infra-annual Labour Statistics](#) and [Monthly unemployment rates](#).

**Table 6 – Unemployment rates by age group (aged 15 and over)**
*Percentage of the labour force of each group, seasonally adjusted*

|                               | Youth (15-24) |      |      |      |      |      |      | Prime-age and Older Workers (25+) |      |      |     |      |      |     |
|-------------------------------|---------------|------|------|------|------|------|------|-----------------------------------|------|------|-----|------|------|-----|
|                               | 2023          | 2024 | 2024 |      | 2024 | 2025 |      | 2023                              | 2024 | 2024 |     | 2024 | 2025 |     |
|                               |               |      | Q3   | Q4   |      | Jan  | Feb  |                                   |      | Q3   | Q4  |      | Jan  | Feb |
|                               |               |      |      |      |      |      |      |                                   |      |      |     |      |      |     |
| <b>OECD</b>                   | 10.6          | 11.1 | 11.4 | 11.1 | 10.9 | 11.0 | 11.1 | 4.1                               | 4.1  | 4.1  | 4.1 | 4.1  | 4.1  | 4.0 |
| <b>G7</b>                     | 9.0           | 9.9  | 10.3 | 10.0 | 9.9  | 9.9  | 10.2 | 3.4                               | 3.6  | 3.6  | 3.6 | 3.6  | 3.5  | 3.5 |
| <b>European Union</b>         | 14.5          | 14.9 | 15.2 | 14.7 | 14.6 | 14.6 | 14.5 | 5.2                               | 5.1  | 5.0  | 5.0 | 5.0  | 4.9  | 4.9 |
| <b>Euro area</b>              | 14.4          | 14.6 | 14.8 | 14.4 | 14.2 | 14.1 | 14.2 | 5.7                               | 5.5  | 5.4  | 5.4 | 5.4  | 5.3  | 5.3 |
| <b>Australia</b>              | 8.4           | 9.4  | 9.6  | 9.0  | 9.2  | 9.1  | 9.1  | 2.8                               | 3.0  | 3.1  | 3.0 | 3.0  | 3.1  | 3.1 |
| <b>Austria</b>                | 10.4          | 10.2 | 10.6 | 11.0 | 10.4 | 10.9 | 11.7 | 4.4                               | 4.6  | 4.7  | 4.6 | 4.7  | 4.8  | 4.5 |
| <b>Belgium<sup>(1)</sup></b>  | 16.0          | 17.3 | 17.8 | 17.6 | 17.6 | ..   | ..   | 4.6                               | 4.7  | 4.5  | 4.8 | 4.9  | 4.8  | 4.8 |
| <b>Canada</b>                 | 10.7          | 13.0 | 13.9 | 13.7 | 14.2 | 13.6 | 12.9 | 4.5                               | 5.3  | 5.4  | 5.6 | 5.5  | 5.5  | 5.5 |
| <b>Chile</b>                  | 21.4          | 20.7 | 21.2 | 20.1 | 19.6 | 21.5 | ..   | 7.6                               | 7.5  | 7.5  | 7.7 | 7.6  | 7.6  | ..  |
| <b>Colombia</b>               | 20.2          | 20.2 | 19.8 | 19.8 | 19.5 | 18.7 | 18.3 | 8.5                               | 8.6  | 8.3  | 8.3 | 8.4  | 8.2  | 8.1 |
| <b>Costa Rica</b>             | 24.8          | 21.2 | 21.9 | 19.8 | 21.3 | 24.2 | ..   | 6.6                               | 5.6  | 4.7  | 5.2 | 5.1  | 5.2  | ..  |
| <b>Czechia</b>                | 8.6           | 9.6  | 11.4 | 9.8  | 9.4  | 10.1 | 9.8  | 2.3                               | 2.4  | 2.2  | 2.3 | 2.3  | 2.0  | 2.3 |
| <b>Denmark</b>                | 11.5          | 14.6 | 14.9 | 16.1 | 16.2 | 16.0 | 12.2 | 4.0                               | 4.7  | 4.7  | 4.9 | 5.4  | 5.1  | 4.6 |
| <b>Estonia</b>                | 17.4          | 19.3 | 21.2 | 17.3 | 18.9 | 17.9 | 18.0 | 5.5                               | 6.6  | 6.7  | 6.8 | 6.8  | 6.8  | 6.8 |
| <b>Finland</b>                | 16.1          | 18.6 | 18.8 | 19.4 | 19.7 | 19.5 | 22.2 | 6.1                               | 7.1  | 7.2  | 7.4 | 7.2  | 7.6  | 7.4 |
| <b>France</b>                 | 17.1          | 18.6 | 19.5 | 18.9 | 18.5 | 18.6 | 19.2 | 6.2                               | 6.0  | 5.9  | 5.9 | 5.9  | 6.0  | 6.0 |
| <b>Germany</b>                | 5.8           | 6.6  | 6.8  | 6.5  | 6.4  | 6.4  | 6.3  | 2.7                               | 3.0  | 3.1  | 3.1 | 3.1  | 3.1  | 3.2 |
| <b>Greece</b>                 | 26.9          | 22.4 | 18.4 | 21.6 | 22.5 | 21.8 | 16.8 | 10.1                              | 9.4  | 9.1  | 8.9 | 8.7  | 8.4  | 8.1 |
| <b>Hungary</b>                | 12.9          | 15.4 | 16.2 | 15.6 | 14.4 | 13.8 | 14.2 | 3.5                               | 3.6  | 3.6  | 3.7 | 3.7  | 3.6  | 3.7 |
| <b>Iceland</b>                | 8.6           | 8.5  | 8.5  | 8.7  | 8.7  | 8.7  | ..   | 2.4                               | 2.4  | 2.3  | 2.4 | 2.5  | 2.6  | ..  |
| <b>Ireland</b>                | 10.6          | 10.6 | 10.5 | 11.6 | 12.5 | 11.8 | 11.3 | 3.4                               | 3.4  | 3.4  | 3.2 | 3.3  | 2.9  | 2.8 |
| <b>Israel<sup>(2)</sup></b>   | 6.0           | 4.6  | 4.8  | 4.0  | 2.8  | 5.0  | 4.2  | 3.0                               | 2.7  | 2.4  | 2.5 | 2.7  | 2.4  | 2.5 |
| <b>Italy</b>                  | 22.7          | 20.3 | 19.6 | 18.8 | 18.5 | 18.3 | 16.9 | 6.7                               | 5.7  | 5.5  | 5.3 | 5.3  | ..   | ..  |
| <b>Japan</b>                  | 4.1           | 4.0  | 4.1  | 3.5  | 3.7  | 4.1  | 4.2  | 2.4                               | 2.4  | 2.4  | 2.4 | 2.3  | 2.3  | 2.2 |
| <b>Korea</b>                  | 5.7           | 6.4  | 5.8  | 6.7  | 6.8  | 5.9  | 6.9  | 2.5                               | 2.6  | 2.4  | 2.9 | 3.6  | 2.8  | 2.5 |
| <b>Latvia</b>                 | 12.3          | 13.6 | 13.0 | 13.7 | 13.4 | 12.9 | 12.5 | 6.1                               | 6.4  | 6.4  | 6.5 | 6.5  | 6.5  | 6.5 |
| <b>Lithuania</b>              | 13.7          | 16.0 | 20.2 | 13.2 | 11.8 | 14.1 | 13.7 | 6.4                               | 6.5  | 6.5  | 6.1 | 6.0  | 6.1  | 6.1 |
| <b>Luxembourg</b>             | 18.5          | 22.0 | 21.9 | 22.0 | 21.5 | 21.6 | 21.8 | 4.1                               | 4.9  | 5.0  | 5.1 | 5.1  | 5.1  | 5.2 |
| <b>Mexico</b>                 | 5.8           | 5.8  | 6.0  | 5.8  | 5.5  | 5.8  | 5.7  | 2.2                               | 2.1  | 2.1  | 2.0 | 2.1  | 2.0  | 2.0 |
| <b>Netherlands</b>            | 8.3           | 8.7  | 8.8  | 8.8  | 8.7  | 8.9  | 8.8  | 2.5                               | 2.6  | 2.6  | 2.6 | 2.6  | 2.7  | 2.8 |
| <b>New Zealand</b>            | 10.7          | 14.0 | 13.7 | 14.8 | ...  | ...  | ...  | 2.5                               | 3.2  | 3.3  | 3.5 | ...  | ...  | ... |
| <b>Norway</b>                 | 10.9          | 12.0 | 11.8 | 11.9 | 12.6 | 11.3 | 11.8 | 2.4                               | 2.7  | 2.6  | 2.6 | 2.7  | 2.4  | 2.4 |
| <b>Poland</b>                 | 11.3          | 10.8 | 10.8 | 10.2 | 10.2 | 10.4 | 10.5 | 2.3                               | 2.3  | 2.5  | 2.2 | 2.2  | 2.1  | 2.1 |
| <b>Portugal</b>               | 20.5          | 21.8 | 20.7 | 21.0 | 20.5 | 20.3 | 20.9 | 5.5                               | 5.3  | 5.4  | 5.4 | 5.3  | 5.3  | 5.3 |
| <b>Slovak Republic</b>        | 19.8          | 19.2 | 18.0 | 17.3 | 17.1 | 16.6 | 16.4 | 5.1                               | 4.6  | 4.6  | 4.5 | 4.5  | 4.5  | 4.5 |
| <b>Slovenia<sup>(1)</sup></b> | 9.9           | 10.8 | 13.2 | 9.3  | 9.3  | ..   | ..   | 3.2                               | 3.1  | 3.3  | 3.2 | 3.1  | 3.0  | 2.9 |
| <b>Spain</b>                  | 28.7          | 26.5 | 26.6 | 25.4 | 25.3 | 25.3 | 25.5 | 10.9                              | 10.2 | 10.1 | 9.6 | 9.5  | 9.3  | 9.1 |
| <b>Sweden</b>                 | 21.7          | 24.0 | 24.7 | 23.8 | 23.6 | 26.8 | 25.2 | 5.8                               | 6.2  | 6.4  | 6.4 | 6.5  | 7.4  | 6.7 |
| <b>Switzerland</b>            | 7.8           | 8.2  | 8.9  | 8.9  | ...  | ...  | ...  | 3.5                               | 3.8  | 4.0  | 3.9 | ...  | ...  | ... |
| <b>Türkiye</b>                | 17.5          | 16.3 | 16.5 | 15.9 | 15.7 | 14.9 | 15.0 | 7.9                               | 7.3  | 7.3  | 7.3 | 7.1  | 7.2  | 7.0 |
| <b>United Kingdom</b>         | 12.0          | 14.0 | 14.8 | 14.7 | 14.5 | 14.6 | ..   | 2.9                               | 2.9  | 2.8  | 2.9 | 2.9  | 3.0  | ..  |
| <b>United States</b>          | 7.9           | 8.9  | 9.3  | 9.3  | 9.0  | 9.0  | 9.7  | 3.0                               | 3.3  | 3.4  | 3.4 | 3.4  | 3.3  | 3.3 |

...: Not applicable ..: Not available

1. Belgium and Slovenia: For youth unemployment, quarterly data are shown for all the months in the quarter.

2. Israel: Data shown in this table are not seasonally adjusted.

Source: OECD (2025) [Infra-annual Labour Statistics](#) and [Monthly unemployment rates](#).

**Methodological information:**

The OECD unemployment rate is calculated as the total number of unemployed people in all OECD countries as a percentage of the total labour force (i.e. the unemployed plus those in employment).

For countries for which unemployment data for the most recent month or quarter are not available, the latest available data are used to compile data for the OECD total.

All rates and levels are seasonally adjusted (s.a.).

For further methodological information, including the impact of COVID-19 on employment and unemployment statistics, see: [Methodological Notes for OECD Unemployment and Labour Market Situation News Releases](#)

**Access Data:**

OECD Database (2025): [Infra-annual Labour Statistics](#)

The entry into force in 2021 of the Integrated European Social Statistics (IESS) Framework Regulation resulted in a new methodology of the EU Labour Force Survey, [updating the definitions of the labour status](#). Information by country on the status of the implementation of IESS regulation as well as on possible resulting breaks in time series can be found in a Eurostat Statistics Explained [article](#).

Statistical data for Israel are supplied by and under the responsibility of the relevant Israeli authorities. The use of such data by the OECD is without prejudice to the status of the Golan Heights, East Jerusalem and Israeli settlements in the West Bank under the terms of international law.

**Contacts:**

For further information contact the OECD's Media Relations Division on (33) 1 45 24 97 00 or e-mail [news.contact@oecd.org](mailto:news.contact@oecd.org); for further information on data contact OECD's Statistics and Data Directorate: [stat.contact@oecd.org](mailto:stat.contact@oecd.org).

**Next releases:**

Unemployment: [15 May 2025](#)

Labour Market Situation: [9 July 2025](#)